

# SUPER SERIES

**WOOD BURNING STOVES**  
FOR HEATING MEDIUM SPACES



# SUPER 27

## FREESTANDING STOVE

FOR MEDIUM SPACES



**DESIGN-A-FIRE**

A SYSTEM BY PACIFIC ENERGY

Pacific Energy Vista Series Wood Stoves are customizable in your choice of door and leg finishes. Available in Nickel and Black.



Black



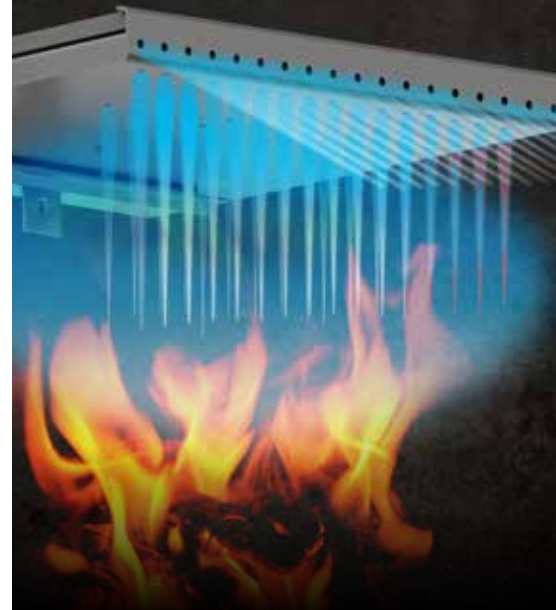
Nickel

### Peak Heat Output

## 21 kW

COMBINED EFFICIENCY	67%
EMISSIONS	1.1 GM/KG
LOG SIZE (MAX)	45 CM
FIREBOX SIZE	61 L
GLASS SIZE	78 CM <sup>2</sup>
WEIGHT	161 KG

Our most popular woodburning stove, the Super delivers superb heating performance, easy loading and operation, and reliability. Customize your Super to complement your home: mount it on a pedestal, choose from a variety of leg finishes, and select the door style and finish.



### BAFFLE SYSTEM

Pacific Energy is a recognized industry leader in “clean burn” technology, as exemplified in our unique high capacity baffle system for preheating secondary combustion air for re-burning. By burning the combustible elements in the air, we improve our stoves’ environmental performance while significantly reducing the amount of wood that is consumed.



### FLOATING FIREBOX

Our floating firebox system is legendary in the industry. Solidly designed with steel brick-support rails, it allows key parts to freely expand and contract, which reduces metal fatigue and adds years of life to the entire fireplace. The steel baffle (part of the clean-burning secondary combustion system) and the flame shield (which protects the stove top from intense heat) are all part of the floating firebox system.



### KNIFE EDGE DOOR

A formed and welded knife edge opening creates a superior air tight seal to the door gasket while strengthening the stove face. This is a more labor intensive design but our experience has proven this is the best way to manufacture a fireplace.



### SINGLE LEVER AIR CONTROL

It's never been simpler to achieve a clean, efficient flame. With Pacific Energy systems, a single, easy-to-operate air control lever can regulate the entire burn.



#### STANDARD FEATURES

- Reliable, Durable Non-Catalytic Technology
- Easy, one-touch operation
- Airwash Technology for clear, clean glass
- Multi-Port Combustion Air Injection System
- Inside and outside combustion air capable
- Floating firebox for extended stove life
- Metallic black finish
- Heavy plate-steel top
- 304 Stainless Steel baffle, insulation cover, rails and flame shield
- Boost air for easy lighting
- Mobile home approved
- North-South loading

#### DESIGN OPTIONS

- Metallic Black Pedestal Base
- Legs - choice of 2 finishes (nickel and black).
- Arched door - choice of 2 finishes (nickel and black)
- Radiant dor - choice of 2 finishes (nickel and black)

#### PERFORMANCE OPTIONS

- Easy-to-use ash disposal system
- Temperature-Actuated Variable-Speed Fan
- Screen Door

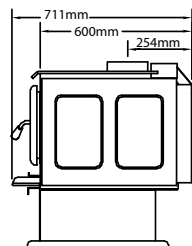
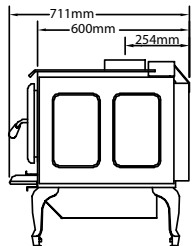
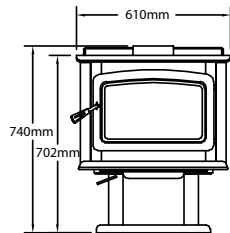
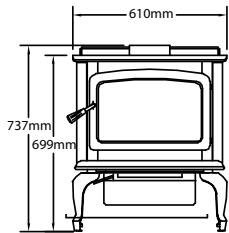
FOR MORE INFORMATION VISIT

[www.pacificenergy.net](http://www.pacificenergy.net)

**SUPER LEG MODEL**

**SUPER PEDESTAL MODEL**

**TECHNOLOGIES**



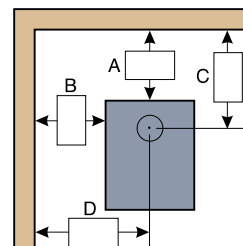
**FLOOR PROTECTOR DIMENSIONS**

FLOOR PROTECTOR: 6mm Thick cement fiber sheet with a thermal resistance of 0.41m<sup>2</sup>degK/W

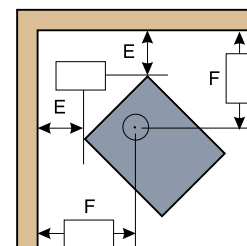
Extending In front of Door Opening (mm)	From Side of Door Opening (mm)
300	200

**CLEARANCES TO COMBUSTIBLES**

	VERTICAL (mm)				CORNER (mm)	
	A	B	C	D	E	F
Flue Pipe	350	375	605	680	275	630
Flue Pipe with Single Shield & Locating Ring	100	375	355	680	200	555
Flue Pipe with single length Decromesh/Shield	100	375	355	680	200	555



STRAIGHT



CORNER

Distributed by:



1300 474 868  
www.pivotstove.com.au



[pacificenergy.net](http://pacificenergy.net)

For reference only. Installations should be based on manuals and rating labels.